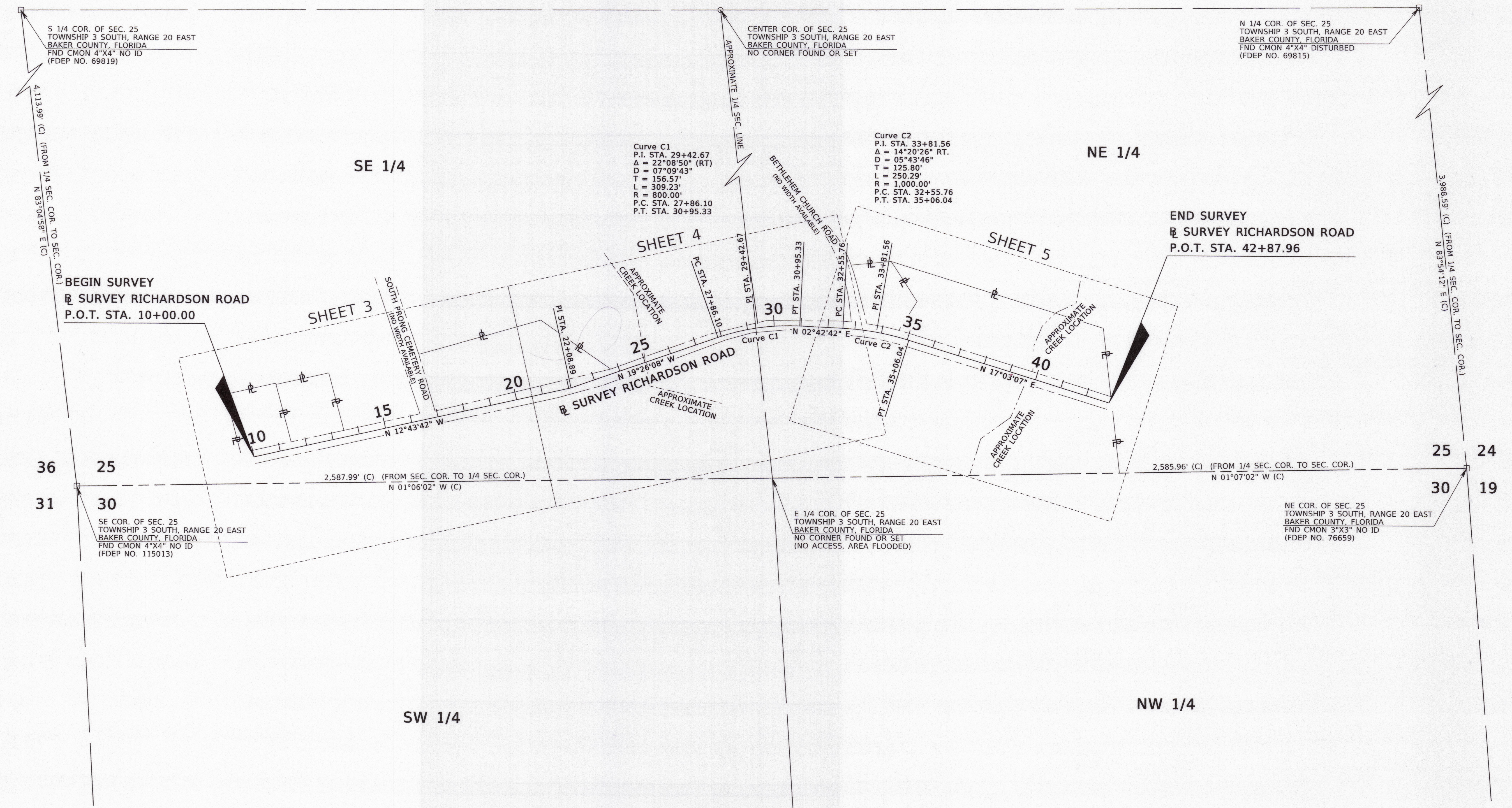
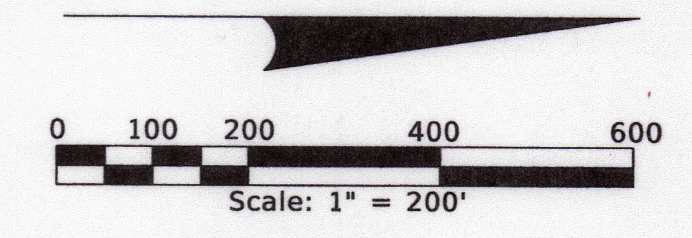


TOWNSHIP 3 SOUTH, RANGE 20 EAST



END SURVEY
 SURVEY RICHARDSON ROAD
 P.O.T. STA. 42+87.96

Curve C1
 P.I. STA. 29+42.67
 Δ = 22°08'50" (RT)
 D = 07°09'43"
 T = 156.57'
 L = 309.23'
 R = 800.00'
 P.C. STA. 27+86.10
 P.T. STA. 30+95.33

Curve C2
 P.I. STA. 33+81.56
 Δ = 14°20'26" RT.
 D = 05°43'46"
 T = 125.80'
 L = 250.29'
 R = 1,000.00'
 P.C. STA. 32+55.76
 P.T. STA. 35+06.04

S 1/4 COR. OF SEC. 25
 TOWNSHIP 3 SOUTH, RANGE 20 EAST
 BAKER COUNTY, FLORIDA
 FND CMON 4"x4" NO ID
 (FDEP NO. 69819)

CENTER COR. OF SEC. 25
 TOWNSHIP 3 SOUTH, RANGE 20 EAST
 BAKER COUNTY, FLORIDA
 NO CORNER FOUND OR SET

N 1/4 COR. OF SEC. 25
 TOWNSHIP 3 SOUTH, RANGE 20 EAST
 BAKER COUNTY, FLORIDA
 FND CMON 4"x4" DISTURBED
 (FDEP NO. 69815)

BEGIN SURVEY
 SURVEY RICHARDSON ROAD
 P.O.T. STA. 10+00.00

SE COR. OF SEC. 25
 TOWNSHIP 3 SOUTH, RANGE 20 EAST
 BAKER COUNTY, FLORIDA
 FND CMON 4"x4" NO ID
 (FDEP NO. 115013)

E 1/4 COR. OF SEC. 25
 TOWNSHIP 3 SOUTH, RANGE 20 EAST
 BAKER COUNTY, FLORIDA
 NO CORNER FOUND OR SET
 (NO ACCESS, AREA FLOODED)

NE COR. OF SEC. 25
 TOWNSHIP 3 SOUTH, RANGE 20 EAST
 BAKER COUNTY, FLORIDA
 FND CMON 3"x3" NO ID
 (FDEP NO. 76659)

KEY MAP
 RICHARDSON ROAD OVER SOUTH PRONG ST. MARYS RIVER BRIDGE NO. 274114

MAINTENANCE MAP
 FOR BAKER COUNTY

FLORIDA DEPARTMENT OF TRANSPORTATION
 SURVEYING AND MAPPING

REVISION	BY	DATE	REVISION	BY	DATE	REVISION	BY	DATE

BY	DATE	FED. PROJ.	SECTION N/A
PRELIM S. HARP	10/10/2024	RICHARDSON ROAD	BAKER COUNTY
FINAL S. HARP	12/18/2024		
CHECKED S. DEES	12/18/2024		

MAPS PREPARED BY: WGL INC. 4371 U.S. HIGHWAY 17 SOUTH, SUITE 203, FLEMING ISLAND, FL 32003 PHONE: (904) 470-4503	DATA SOURCE: SURVWD 2700005 SCALE: 1" = 200'
F.P. NO. 4363331	SHEET 2 OF 6